

オージス総研の
アジャイラーがわいわい語る
アジャイル × モデリング

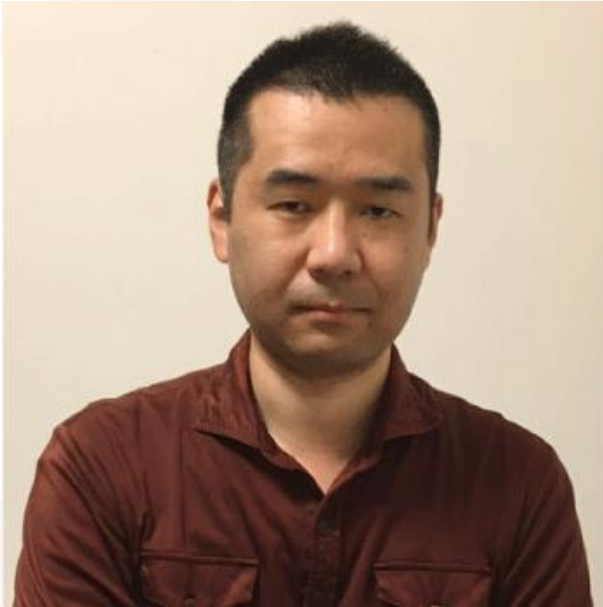
Agile Japan 2021 スポンサーセッション
2021/11/17

株式会社オージス総研
山内 亨和
水野 正隆
原田 巖



 **オージス総研**

自己紹介



山内 亨和



水野 正隆



原田 巖

Heart of Agile



Improve the direction of your ideas, their technical implementation, and your internal processes.



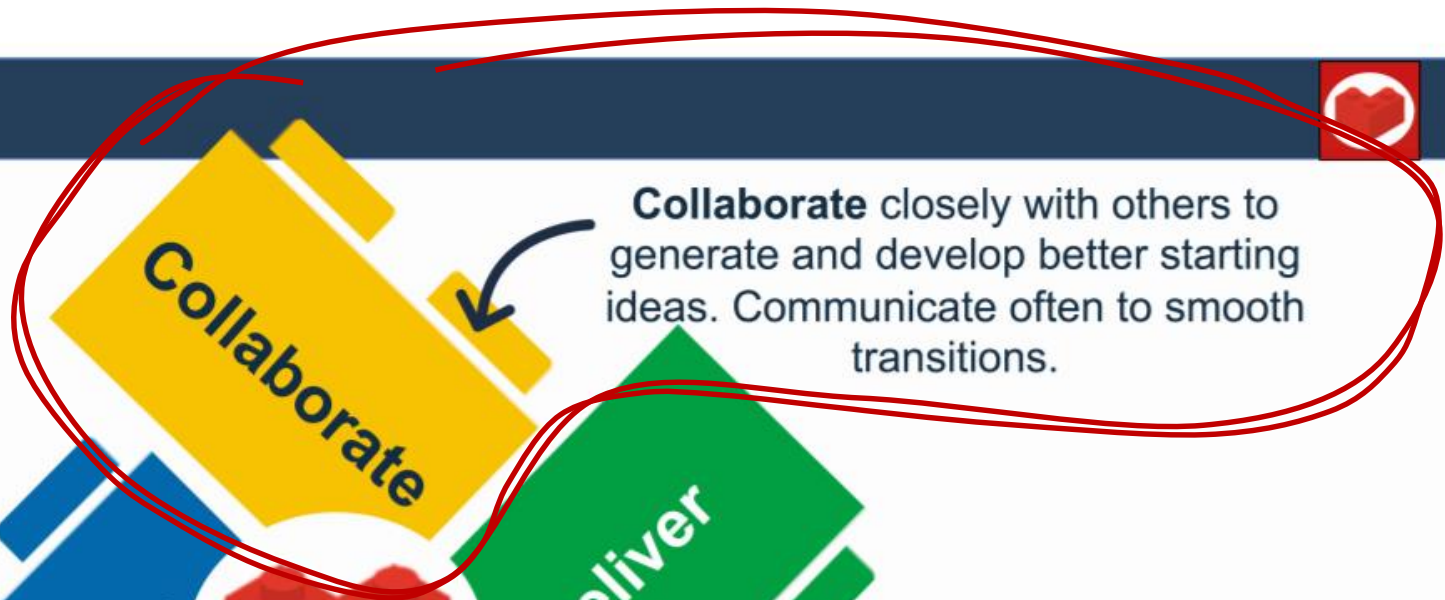
Reflect periodically, along the way. Think about what you've learned in your collaboration and from your deliveries.



Collaborate closely with others to generate and develop better starting ideas. Communicate often to smooth transitions.



Deliver small probes initially to learn how the world really works. Expand deliveries as you learn to predict and influence outcomes.





**“Just Talk (ただ、話す)”は、大事な姿勢。
だけど、モデリングっていう武器もいいですよ！**

Just Talk – ただ話す



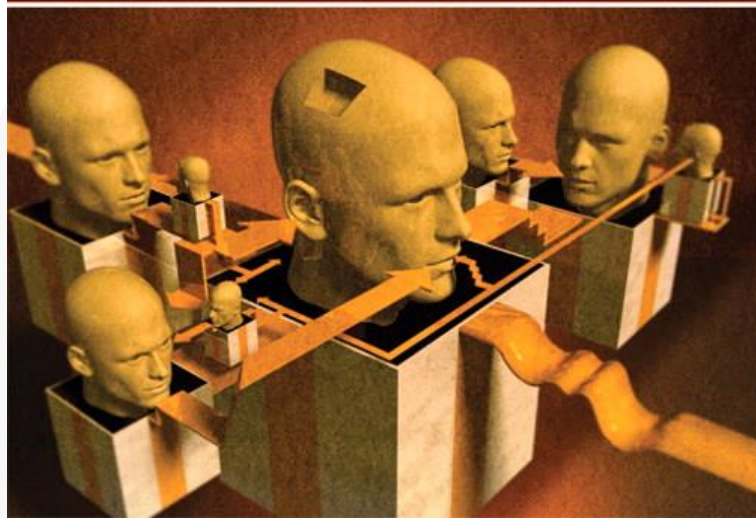
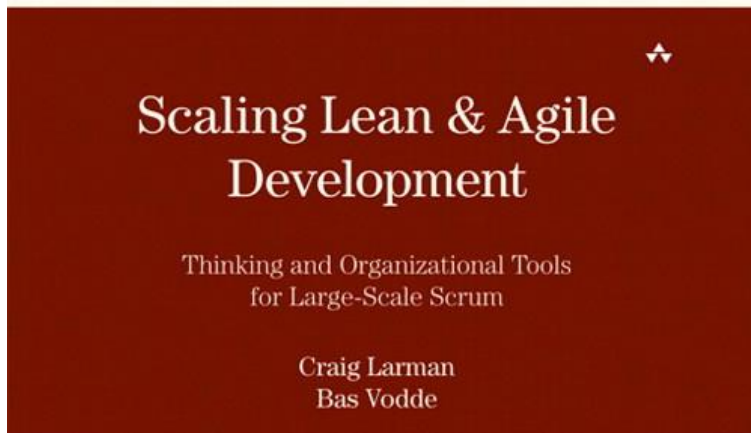
(丸善出版ホームページより引用)

“

1. あなたは、チーム B との“調整が必要”なことに気づきます
2. 立ち上がって、
3. チーム B のところに歩いて行き、
4. 「やあ、話し合おうよ！」と言います。

もちろん、このあとモデル使って話しますよね？

The First Law of Diagramming: Model to Have a Conversation



(Addison-Wesley Professionalホームページより引用)

The primary value in diagrams is in the discussion while diagramming – we model to have a conversation.

– Craig Larman, Bas Vodde

モデルは対話を含むべきだ。

「アジャイル×モデリング」について 話しながらモデリングしてみる



宣伝

ビジョンから価値へ

バックログ・リファインメント実践者向けオンライントレーニング オープンコース始めました！

PRODUCT CANVAS (2/2)

Product: Squeaky Klean | Organization: Example Inc. | Date: 2019-01 | Version: v1.06

<p>User</p> <p>Persona</p> <p>Description: Six standard communication with customers and contractors. Most service communication is through customer-facing. Includes all activities surrounding customer goals, including, scheduling, estimating, marketing, etc. This is done with the following: "to get things done" you respond to both of your customer requests which is essential.</p> <p>Needs: Being visible to essential, up-to-date customer and property data. Being easy to communicate with. Having the necessary tools, e.g. providing customer of ongoing jobs.</p> <p>Goals: Provide efficient and customer service. Record 95% service level agreements to earn bonus.</p> <p>User Role Map</p>	<p>Interface</p> <p>Context Diagram</p> <p>Estimator Prototype</p>	<p>Action</p> <p>Features</p> <ul style="list-style-type: none">SchedulingEstimationAnalyticsInvoicingInventory ManagementAccount Management <p>Business Process Diagram</p> <p>Story Map</p>	<p>Data</p> <p>Data Model</p> <p>State Diagram</p>	<p>Control</p> <p>Scheduling</p> <ul style="list-style-type: none">Customer must have no outstanding paymentsService must be an offering <p>Cancellation</p> <ul style="list-style-type: none">Cancellation less than 8 hours prior to schedule...Preferred customers must not be charged penalty <p>Estimation</p> <ul style="list-style-type: none">Calculate estimate as: ...Determine discount using (table D) <p>Decision Table</p> <table border="1"><thead><tr><th>Property type</th><th>Total paid services</th><th>Discount %</th></tr></thead><tbody><tr><td>Residential</td><td>0-\$499</td><td>0%</td></tr><tr><td>Residential</td><td>\$500-\$999</td><td>5%</td></tr><tr><td>Residential</td><td>\$1000-\$4999</td><td>15%</td></tr><tr><td>Residential</td><td>>\$5000</td><td>25%</td></tr><tr><td>Commercial</td><td>0-\$499</td><td>0%</td></tr><tr><td>Commercial</td><td>\$1000-\$2999</td><td>15%</td></tr><tr><td>Commercial</td><td>\$3000-\$4999</td><td>25%</td></tr><tr><td>Commercial</td><td>>\$5000</td><td>40%</td></tr></tbody></table>	Property type	Total paid services	Discount %	Residential	0-\$499	0%	Residential	\$500-\$999	5%	Residential	\$1000-\$4999	15%	Residential	>\$5000	25%	Commercial	0-\$499	0%	Commercial	\$1000-\$2999	15%	Commercial	\$3000-\$4999	25%	Commercial	>\$5000	40%	<p>Environment</p> <ul style="list-style-type: none">OnsiteHandheld: Apple iOSOfficeLaptop: Windows Chrome 64.0.32+S/W PlatformAnxious Anti-VirusCassidy 3500 RouterFast Switch 73Open Connect Protocol <p>Architecture Diagram</p>	<p>Quality Attribute</p> <ul style="list-style-type: none">Response Time: Calculated price shows within 3 seconds of selectionAvailability: 95% M-F EST hours 8:30 am - 6 pmRecoverability: 2 hours MTR
Property type	Total paid services	Discount %																															
Residential	0-\$499	0%																															
Residential	\$500-\$999	5%																															
Residential	\$1000-\$4999	15%																															
Residential	>\$5000	25%																															
Commercial	0-\$499	0%																															
Commercial	\$1000-\$2999	15%																															
Commercial	\$3000-\$4999	25%																															
Commercial	>\$5000	40%																															

CC BY-NC-SA | This work is licensed under the Creative Commons Attribution-NonCommercial-ShareAlike 4.0 International License. Download the Product Canvas at: <https://www.ebgconsulting.com/ProductCanvas.pdf>

DESIGNED BY: Ellen Gottesdiener, EBG Consulting | @ellengott | version 19.01

ebg ebgconsulting.com

(プロダクトキャンバス : EBG Consulting社より引用)



オーガス総研



お客様のシステムが環境の変化に対応し長期間持続していくための「百年アーキテクチャ」を私たちは目指しています。

以上